



## AUTOMATIC TOURNIQUET DEVICES

*We produce for the world..*



Avrasyamed Medikal Tıb. Cih. San. Tic. Lti. Şti.  
Cihangir, Artaş Tic. San. Merkezi,  
Güvercin Cd. No:4/144  
34310 Avclar/İstanbul

CE  
1984



[www.medione.com.tr](http://www.medione.com.tr)

# TRQ-2020, TRQ-2022 and TRQ-2024 Automatic Tourniquet Devices

MediOne tourniquet systems are offered in two-port and four-port configurations to address diverse clinical requirements.

The product portfolio—comprising tourniquet units, cuffs, and compatible accessories—is designed with operational efficiency, ease of use, and patient comfort in mind, providing a reliable and integrated solution for healthcare institutions.



# AUTOMATIC TOURNIQUET DEVICES

## TRQ-2022



2 Channel

## TRQ-2024



4 Channel

### TouchScreen

- 7" TFT
- 800x480 pixel
- Capacitive, Color

### Operating Accuracy

- Pressure Accuracy:  $\pm 5$
- Pressure Increment: 5 mmHg
- Time Increment: 1 minute

### Operating Parameters

- Pressure Range: 20–650 mmHg
- Alarm Duration: 2–240 minutes
- Integrated Air Pump: (1.5 bar), 6 L/min flow rate

### Body Design

- ABS Housing
- Ergonomic Grip Area
- Durable and Easy to Clean

### Power & Battery

- Lithium-ion Battery (14.4 V – 5.8 Ah)
- Operating Time: 20 hours
- 100–240 V / 50–60 Hz; 50 VA

### Dimensions

- 275x235x265 mm
- $\leq 4$  kg

## Key Features

- Automatic Leak & System Check
- Integrated Safety Alarm System
- Visual and Audible Warning Mechanism
- Optional Transport Stand with Basket
- Touchscreen Lock Function

## Application Methods

- Use with Single or Dual Tourniquet Cuffs
- TRQ-2022: Dual-Channel Output
- TRQ-2024: Four-Channel Output
- Single or Dual Limb Application
- IVRA Mode (Intravenous Regional Anesthesia)

### Main Screen

The main screen provides real-time monitoring of inflation/deflation status, IVRA mode, battery level, power supply status, date and time, along with access to settings and alarm mute controls.



### Quick Selection Keys

Offers four independent quick presets for pressure and time. Selected values can be stored by pressing and holding for 5 seconds and easily recalled for future procedures.



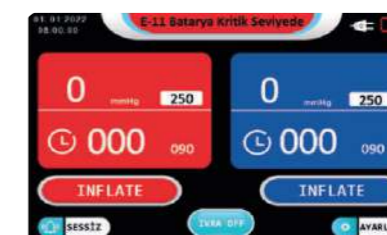
### Pre-Alarm Function

In addition to pressure and operation time settings, the pre-alarm duration is adjustable. The early warning enables time extension directly from the screen before the primary set time elapses.



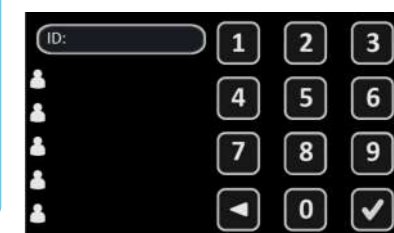
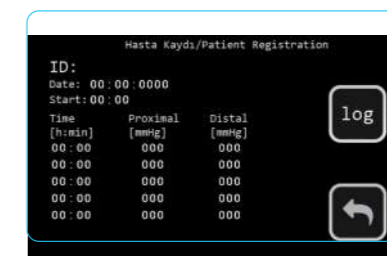
### Safety Features

To ensure patient safety, the system prevents automatic deflation of the air tank upon completion of the set operation time or during power interruptions. The device also notifies the user through visual and audible alerts.



### Patient Record and Case Screen

An 11-digit Patient ID enables case registration. During the procedure, the latest proximal and distal pressure values can be monitored in real time through the case management screen.



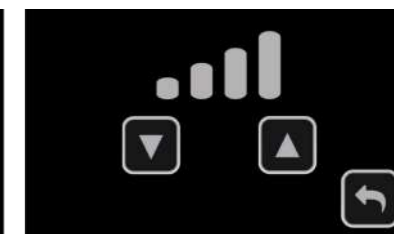
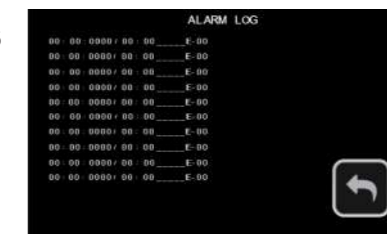
### IVRA Safety Mechanism

During IVRA procedures, cuff deflation requires a two-step confirmation process to prevent unintended pressure reduction.



### Alarm Log and Alarm Tone Settings

The alarm volume is adjustable across four levels, and the last 10 recorded alarms can be viewed on the screen.



# AUTOMATIC TOURNIQUET DEVICES

# TRANSPORT STAND

## TRQ-2020



### TouchScreen

- LED Display
- Membrane Keypad

### Operating Parameters

- Pressure Range: 20–650 mmHg
- Alarm Duration: 2–240 minutes
- Integrated Air Pump:  
(1.5 bar), 6 L/min flow rate

### Power & Battery

- Lithium-ion Battery  
(14.4 V – 2.8 Ah)
- Operating Time: 20 hours
- 100–240 V / 50–60 Hz; 50 VA

### Operating Accuracy

- Pressure Accuracy:  $\pm 5$
- Pressure Increment: 5 mmHg
- Time Increment: 1 minute

### Body Design

- ABS Housing
- Ergonomic Grip Area
- Durable and Easy to Clean

### Dimensions

- 275x235x265 mm
- $\leq 4$  kg

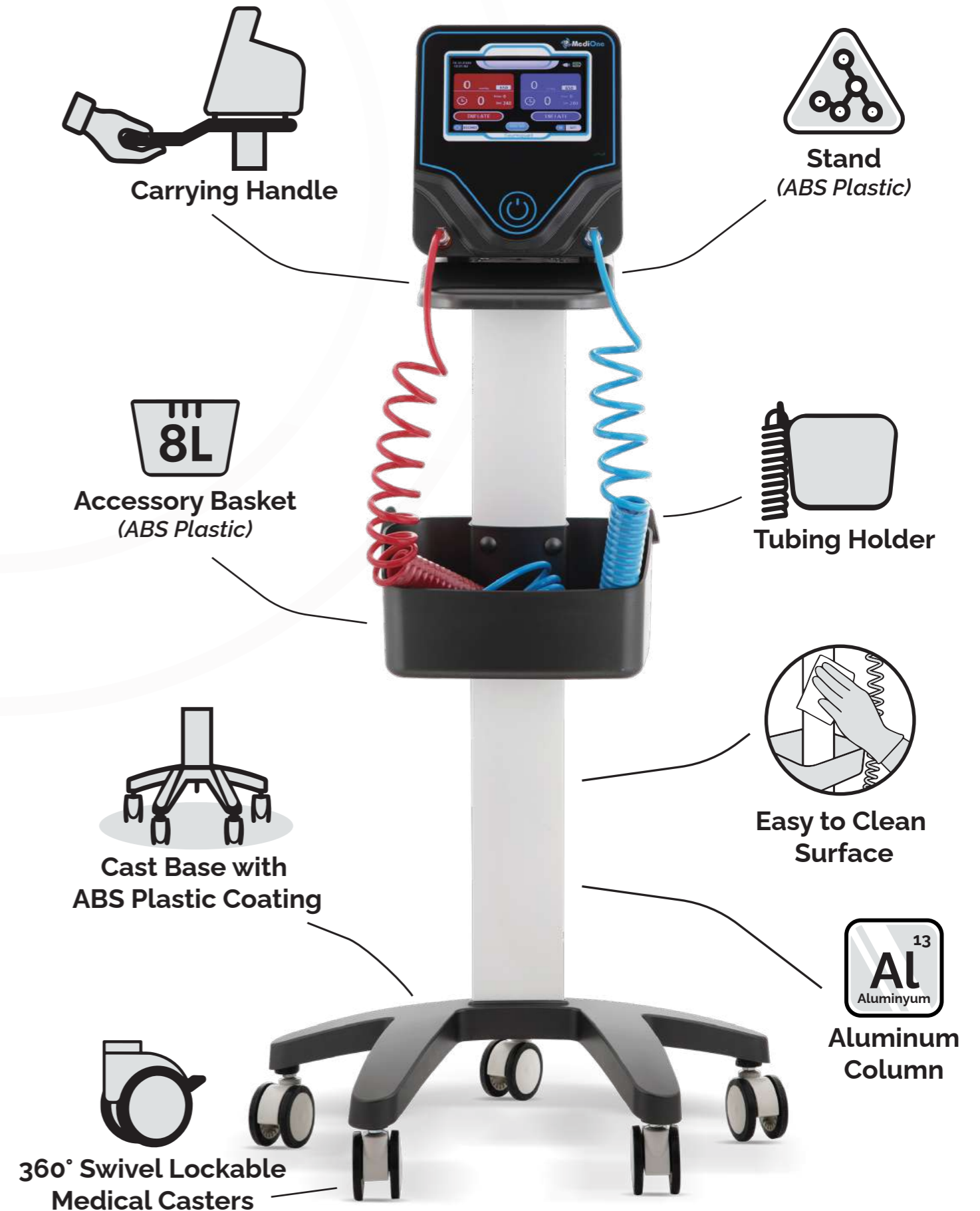
## Key Features

- Automatic Leak & System Check
- Integrated Safety Alarm System
- Visual and Audible Warning Mechanism
- Optional Transport Stand with Basket
- Pre-alarm Function

## Application Methods

- Use with Single or Dual Tourniquet Cuffs
- Dual-Channel Output Configuration
- Single or Dual Limb Application
- IVRA Mode (Intravenous Regional Anesthesia)

## TRQ-75



# TOURNIQUET CUFFS

## Reusable Tourniquet Cuffs



MediOne tourniquet cuffs engineered for safe pressure control and enhanced patient comfort during surgical procedures. Available in various sizes for both pediatric and adult patients. Durable outer fabric and flexible TPU air bladder ensure even pressure distribution.

### Color-Coded Size Differentiation

The color codes on the cuff edges allow for quick and easy identification of different sizes.



### Flexible Tubing Design

The kink-resistant flexible tubing ensures stable pressure transfer between the device and cuff, while providing freedom of movement during procedures.

### Secure Fastening

The adjustable Velcro fastening system ensures a secure fit for various limb circumferences, providing stable use throughout the procedure.

### Product Labeling & Traceability

Each cuff features a product label displaying the model, size, LOT number, and manufacturer information. Traceability is supported via a QR code (UDI).

## Conical Type

### Design & Construction

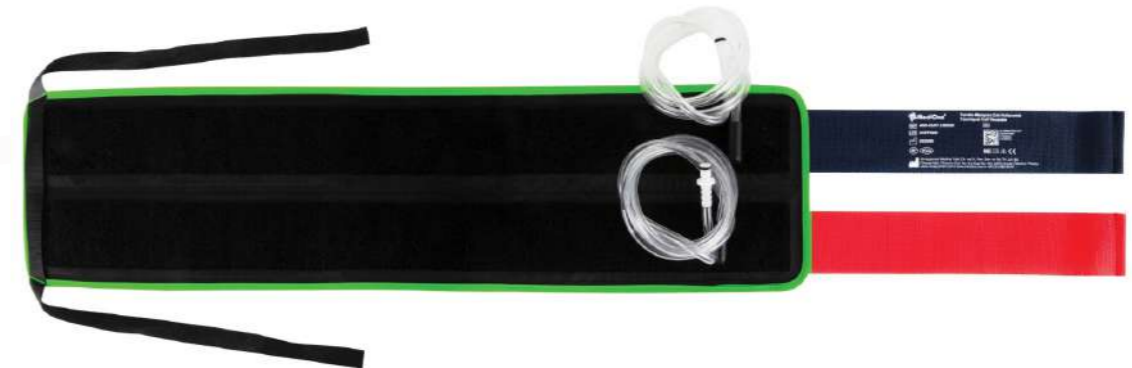
Conical tourniquet cuffs feature a tapered design that conforms to the anatomy, providing a better fit on the limb and promoting even pressure distribution, enhancing patient comfort and procedural efficiency.



## IVRA Type

### Design & Construction

IVRA cuffs are used to temporarily control blood flow in the limbs during orthopedic surgical procedures. Their dual-chamber, dual-tubing design ensures more even and safe pressure distribution. They are designed to accommodate various body sizes and clinical requirements.



## Straight Type

### Design & Construction

The single-chamber design allows for practical application. Its ergonomic and flexible body comfortably wraps the limb, facilitating ease of use for surgical teams.



# TOURNIQUET CUFFS

# TOURNIQUET ACCESSORIES

Model	Color	Length	Width	Applications	Chamber Type	Cuff Type	Number of Tubes
AVR-CUFF S008		8" 21 cm	2" 5 cm	Infant Arm	Single	Single	1
AVR-CUFF S012		12" 31 cm	3" 5 cm	Infant Leg, Child Arm	Single	Single	1
AVR-CUFF S015		15" 38 cm	4" 10 cm	Child Leg, Adult Arm	Single	Single	1
AVR-CUFF S018		18" 46 cm	4" 10 cm	Child Leg, Adult Arm	Single	Single	1
AVR-CUFF S024		24" 61 cm	4" 10 cm	Adult Arm (Obese) Adult Leg (Slim)	Single	Single	1
AVR-CUFF S030		30" 76 cm	5" 13 cm	Adult Leg (Slim)	Single	Single	1
AVR-CUFF S034		34" 86.5 cm	5" 13 cm	Adult Leg (Normal)	Single	Single	1
AVR-CUFF S038		38" 96.5 cm	5" 13 cm	Adult Leg (Obese)	Single	Single	1
AVR-CUFF S042		42" 107 cm	6" 15 cm	Adult Leg (Obese)	Single	Single	1
AVR-CUFF S044		44" 112 cm	6" 15 cm	Obese Individuals	Single	Single	1
AVR-CUFF 2XD014		14" 35.5 cm	4" 10 cm	Child Leg, Adult Arm	Double	Double	2
AVR-CUFF 2XD020		20" 51 cm	6" 15 cm	Child Leg, Adult Arm	Double	Double	2
AVR-CUFF 2XD026		26" 66 cm	6" 15 cm	Adult Arm (Obese–Slim)	Double	Double	2






AVR-H005

## Tourniquet Cuff Tubing

### Technical Information

- Length: 5 m
- Structure: Spiral
- Colors: Blue / Red
- Application: Medical tourniquet systems

## Quick-Connect Couplings

Image	Description	Inner Diameter (in)	Inner Diameter (metric)	Product Code	L	W	H
	Plastic IN-LINE Valve-Free	3/16"	4.8mm	AVR-2024-07	41.9	15.7	15.7
	Plastic IN-LINE Double Closure	3/16"	4.8mm	AVR-2024-08	41.9	15.7	20.03
	Stainless Steel Panel Mount	--	--	AVR-2020-14	--	--	--

### AVR-2024-07 & AVR 2024-08

Main Material: Acetal  
 Thumb Lock: Stainless Steel  
 Valve / Spring: Acetal – PDFM / 316 St. Steel  
 Color: White  
 Pressure: Vacuum – 8.3 bar  
 Temperature: -40°C / +82°C

### AVR-2020-14

Main Material: Acetal  
 Thumb Lock: Stainless Steel  
 Valve / Spring: Acetal – PDFM / 316 St. Steel  
 Color: White  
 Operating Pressure: Vacuum – 8.3 bar  
 Operating Temperature: -40°C to +82°C  
 Compatible Hose Sizes:  
 1/8" – 3/8"  
 3.2 mm – 9.5 mm

# TOURNIQUET ACCESSORIES

## Esmarch Bandage



The Esmarch bandage is a high-performance medical bandage designed for rapid and controlled hemostasis in the arms and legs. Safely used in orthopedic and surgical applications, it is available in various widths, thicknesses, and lengths to accommodate diverse clinical needs. Its latex-free construction ensures both patient and user safety.

Product Code	Width	Length	Applications
ES75	75 mm	10 m	Small and medium-sized bleeding areas, applications for children's and adults' arms and legs.
ES100	100 mm	15 m	Large extremities, adult leg applications, and orthopedic operations.
ESC150	150 mm	20 m	Large body areas, suitable for wide-surface applications.



Elastic Structure



Non-Slip Matte Surface



## Pressure Infusion Bag

Designed for rapid IV infusion and pressurized fluid administration. Single-patient use design helps prevent cross-contamination.

### Technical Information

- Pressure Range: 0 – 300 mmHg
- Maximum Pressure: 300 mmHg
- Minimum 10,000 Use Cycles

### Product Code Capacity

BG05	500 ml
BG10	1000 ml
BG30	3000 ml



Durable TPU Inner Bladder



## Tourniquet Cuff Covers

Product Code	Size	Measurement
SL-S	S	10 x 26
SL-M	M	15 x 30
SL-L	L	20 x 34

# AUTOMATIC TOURNIQUET DEVICES



Lithium  
Battery



Touchscreen  
Display



Build-in  
Air Pump



Precision  
Operation

## TRQ

2020- 2022- 2024

[www.medione.com.tr](http://www.medione.com.tr)

 **MediOne**<sup>®</sup>

*We Produce for the World..*